

The content is published under a Creative Commons Attribution Non-Commercial 4.0 License.

## Unreviewed Mixed Matters Article:

# Event Review: Archeofest 2016: among Experimental Archaeology, Ethnography and Scientific Disclosure

Persistent Identifier: <https://exarc.net/ark:/88735/10259>

[EXARC Journal Issue 2016/4](#) | Publication Date: 2016-12-01

Author(s): Massimo Massussi <sup>1</sup> ✉, Sonia Tucci <sup>1</sup>

<sup>1</sup> Paleoes - eXperimentalTech archeoDrome, Via Carlo Arturo Jemolo 312, 00158 Rome, Italy.



The Archeofest is an experimental archaeological festival designed by Paleoes - eXperimentalTech ArcheoDrome (EXTAD), a cultural association comprising of experimental archaeologists, anthropologists, experts of ancient technologies and their re-enactments, whose focus on making the archaeological knowledge more comprehensive to the public.



All three days of the event were dedicated to experiments that enhance the understanding of ancient technologies.

The third salentina edition of Archeofest was held between the 8 - 10th July 2016, and took place in prestigious Strafella palace, Morciano di Leuca, (Salento, Italy). This edition was held in collaboration with the town hall of Morciano di Leuca, the Cultural Association Archès and other cultural partners (See Figure 1).

All three days of the event were dedicated to experiments that enhance the understanding of ancient technologies. The festival was divided into different areas of archaeological

experimentation, including flint knapping (See Figures 2-4), ancient metalworking (See Figures 5-6), ancient hand-weaving and spinning (See Figures Figs. 7-9), ancient sailing and fishing, ancient toreutics (See Figures Figs. 10-11), as well as palaeoanthropology.

The experimental activity dedicated to ancient weapon throwing took place in the wonderful setting of Leuca Piccola (See Figures 12-13), a historic-monumental site where pilgrims heading to the famous S. Maria di Leuca "De finibus terrae" Sanctuary, used to stay in previous centuries.

Atlatls and nude bows (See Figures 14-15) were used for this kind of activity. The resulting impacts from the lithic arrow heads (back pointed), created an interesting sample to compare (See Figures 16-17). Obtained data will form part of a larger data set reflecting upon the environment of the upper Palaeolithic, with a focus on the late Epigravettian of Salento (See Figures 18-19).


Other areas of the festival were dedicated to the ancient traditions of handicraft. Many participants who handcraft had been actively involved in this Archeofest edition. In fact one of goals was about creating a connection to study the ancient technology and the local ethnographical tradition using an analogical-comparative key. The people involved included specialists who construct stone walls and 'pajare' (salentine typical rural buildings) (See Figure 20), who create fish traps (See Figure 21), and who specialise in textile decoration techniques utilising twines, along with weavers (See Figure 22) and spinners.

The technique of twining was utilised for both the fish traps and the textile decoration (See Figure 23). The authors found the use of the twine technique as a common denominator for these two different handicrafts really fascinating.

The reconstruction of the spinning technical gesture was another interesting activity. Thanks to Mrs Antonietta Imperato from Ruggiano, who is an 80 years old spinning specialist (See Figure 24), a part of the ancient spinning technique of Basso Salento was recreated, and the salentina spinner wool, linen and hemp toolkit identified.

Many practical activities for children (See Figures 25-28), along with a number of conference talks took place during Archeofest. The Archeofest event came to a close with a few cultural cocktails, and scientific disclosure regarding the prehistory of Salento, its human evolution and the new archaeological excavations at the Palaeolithic site of Grotta Romanelli (See Figure 29).

The Archeofest had been under the patronage of the Puglia Region and the consortium SAC Porta d'Oriente; universities and Italian institutes of research, among these PaleoFactory Lab - Department of Earth Sciences, "Sapienza" Rome, Is.I.P.U. (Italian Institute of Human Palaeontology), ICOM, the Museo Civico di Maglie (Lecce), the Gruppo Speleologico Salentino, and also other associations in Puglia, such as Antiqua Mater and the Studio Mètrika. Since its first edition in 2014, Archeofest has been internationally by the Ny Carlsberg Glyptotek, Copenhagen.

 **Keywords** [event](#)  
[experimental archaeology](#)  
[review](#)

 **Country** [Italy](#)

 **Share This Page**

[f](#) [X](#) [in](#)

## | Corresponding Author

**Massimo Massussi**

Paleoes - eXperimentalTech archeoDrome

Via Carlo Arturo Jemolo 312

00158 Rome

Italy

[E-mail Contact](#)

## | Gallery Image



Ministero  
dei beni e delle  
attività culturali  
e del turismo



III Festival di Archeologia Sperimentale in Salento

# ARCHEOFEST

Associazione Culturale Paleoos in collaborazione con Il Comune di Morciano di Leuca e L'Associazione Culturale Archè

## LABORATORI DI ARCHEOLOGIA

Save the date  
8-9-10 luglio 2016

**SPERIMENTALE** per "vedere" e "rivivere" la storia, in un processo cognitivo immediato. Un modo alternativo, **costruttivo** e **creativo** per conoscere le nostre radici.

**3 giorni** di Conoscenza, Divulgazione

Scientifica e Divertimento! **#leradicatien**



## SperimentaleMente

# Dalla Pietra alle resine,  
dalle fibre naturali alle reti,  
dai minerali ai metalli

# sperimentare per  
comprendere le radici

# tecnologie antiche per riscoprire  
la tradizione del fare



**PALAZZO STRAFELLA**  
Morciano di Leuca

Archeofest

Per info: [www.paleoes.com](http://www.paleoes.com)

Archeofest

339 6203329 | 3405897632



FIG 1. ARCHEOFEST POSTER



FIG 2. FLINT KNAPPING 1



FIG 3. FLINT KNAPPING 2



FIG 4. FLINT KNAPPING 3



FIG 5. METALWORKING 1



FIG 6. METALWORKING 2



FIG 7. ANCIENT WEAVING



FIG 8. ANCIENT SPINNING 1



FIG 9. ANCIENT SPINNING 2



FIG 10. TOREUTIC 1



FIG 11. TOREUTIC 2



FIG 12. LEUCA PICCOLA 1



FIG 13. LEUCA PICCOLA 2



FIG 14. ATLATL



FIG 15. NUDE BOW



FIG 16. POINT MULTI-FRACTURED (IMPACT\_1)



FIG 17. DOUBLE SNAP FRACTURE (IMPACT\_2)

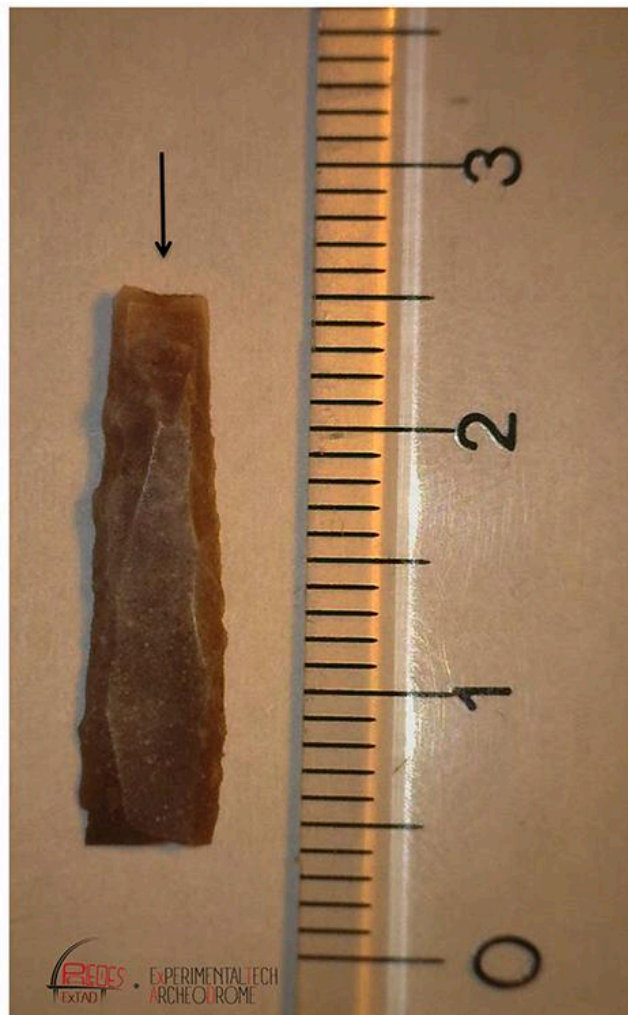


FIG 18. ARCHAEOLOGICAL POINT FOUND AT GROTTA ROMANELLI SITE (EPIGRAVETTIAN)



FIG 19. EXPERIMENTAL POINT



FIG 20. PAJARE



FIG 21. FISH TRAP



FIG 22. TRADITIONAL WEAVING



FIG 23. TRADITIONAL GESTURE



FIG 24. TRADITIONAL SPINNING



FIG 25. EXCAVATION PRACTICAL ACTIVITY FOR CHILDREN (CHILDREN 1)



FIG 26. ARCHAEOLOGICAL DOCUMENTATION ACTIVITY FOR CHILDREN (CHILDREN 2)



FIG 27. HUMAN LANGUAGE ACTIVITY FOR CHILDREN (CHILDREN 3)



FIG 28. MODELLING ANCIENT SHIP ACTIVITY FOR CHILDREN (CHILDREN 4)



FIG 29. GROTTA ROMANELLI CONFERENCE